

**MEDSONIC**  
SURGICAL TECHNOLOGIES

OPERATION THEATRE TABLE  

---

CATALOGUE



[www.medsonic.uk](http://www.medsonic.uk)  
[www.medsoniceurope.com](http://www.medsoniceurope.com)



# About Us

**MEDSONIC** is a Multinational British Company with Head Quarters in London-UK, and Thessaloniki Greece, and Collaboration factory facilities in Texas-USA, China, India, and Turkey.

---

**MEDSONIC** was started as a Research and Development company that provides and develops Medical and Surgical Solutions and products to other factories and partners, yet in 2021 where Medsonic started to provide trading and marketing solutions for its partners.

---

Our solutions included Surgical Vessel Sealing System, Laparoscopic hand Instruments, Surgical Trocars, Surgical Staplers, Oxidized Regenerated Cellulose, Meshes, Sutures, Operating Room Tables, Operating Room Lights OT table, OT lights, clean room panels, hospital Doors, Electrosurgical Equipment, CSSD equipment and full Modular OT under the brand name of MEDSONIC

---

Provides the most essential solutions for Minimally Invasive Surgery in a smart cost effective Disposables, Reposables, and Reusable Hand instruments.

---

We are spending a huge amount on scientific and creative energy, to provide our partners and the market with an outstanding solution We are present in many parts of the world and we are in a continuous networking improving to achieve the world wide forecasted presence

**MEDSONIC**  
SURGICAL TECHNOLOGIES

# Contents

MEDSONIC - 2000 PREMIUM.....	5
MEDSONIC - 2000.....	7
MEDSONIC - 1000 ADVANCE.....	9
MEDSONIC - 1000.....	11
SS - 500.....	12
SS - 501SE.....	14
SS - 501.....	16
SS - 504.....	18
SS - 504H.....	19
SS - 504EX.....	20
SS - 503.....	21
SS - 502.....	22
SS - 506.....	24
SS - 505H.....	26
SS - 505E.....	28
SS510.....	30
SS A511.....	32



**MEDSONIC**  
SURGICAL TECHNOLOGIES



**ELECTRICALLY OPERATED C - ARM  
COMPATIBLE OPERATING TABLE  
MEDSONIC - 2000 PREMIUM**

Inbuilt:  BATTERY BACKUP  ADDITIONAL CONTROL PANEL  ZERO POSITION  MEMORY FOAM



Inbuilt:



Floor Locking by Remote



Weight Capacity - 300 Kg



Sliding Top

Optional



Low Height

**ACCESSORIES**

- All accessories are made in German.

# MEDSONIC - 2000 PREMIUM

## COMPLETE 304G STAINLESS STEEL

**MEDSONIC**  
SURGICAL TECHNOLOGIES



### SALIENT FEATURES

- Center Pillar.
- Stainless Fitting – Detachable, head, leg section.
- In built kidney bridge.
- Five Sectional Radio – Translucent Top.
- Base fiver made of attractive, easy to clean
- Stainless Steel.
- Sophisticated mechanics provide smooth, step less articulation of the table top for precise patient positioning.
- Stand by Battery back-up with recharging circuit.
- Floor Locking system by Remote
- Split type leg section

### TECHNICAL DATA

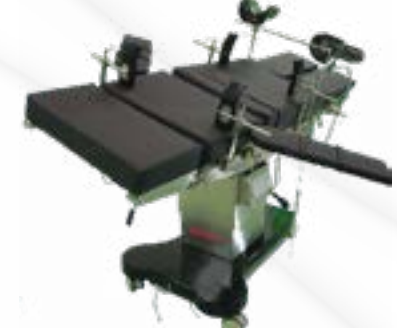
Head Plate Up/Down:	40degree/30degree
Leg Plate Down:	90 degree
Leg Plate Split:	180 degree
Flex Reflex:	80degree/220degree
Kidney Bridge:	5 degree
Power Input:	220V-50Hz
Table Length:	77 inch
Table Width (without side rails):	21 inch
Table Height (without Matt):	29 - 39 inch
Trendelenburg / Reverse TB	25 degree/25 degree
Back Plate Up/Down	75 degree/ 40 degree
Lateral Tilt Right/Left	20 degree / 20 degree
Back Plate Up/Down	80 degree / 40 degree



Height Adjustment Down



Chair Position



Lateral Tilt Left



Lateral Tilt Right



Trendelenburg



Anti-Trendelenburg



**ELECTRICALLY OPERATED C - ARM  
COMPATIBLE OPERATING TABLE  
MEDSONIC - 2000**

Inbuilt: ADDITIONAL CONTROL PANEL ZERO POSITION MEMORY FOAM



Inbuilt:



Sliding Top

Optional



Low Height



Floor Locking by Remote



BATTERY BACKUP



Leg Support



Shoulder Support



Anesthetic Screen



Clamps

# MEDSONIC - 2000

COMPLETE 304G STAINLESS STEEL



## SALIENT FEATURES

- Center Pillar.
- Stainless Fitting – Detachable, head, leg section.
- In built kidney bridge.
- Five Sectional Radio – Translucent Top.
- Base fiver made of attractive, easy to clean Stainless Steel.
- Sophisticated mechanics provide smooth, step less articulation of the table top for precise patient positioning.
- Rechargeable battery in built
- Sliding top.



## TECHNICAL DATA

Head Plate Up/Down:	40degree/30degree
Leg Plate Down:	90 degree
Leg Plate Split:	180 degree
Flex Reflex:	80degree/220degree
Kidney Bridge:	5 degree
Power Input:	220V-50Hz
Table Length:	77 inch
Table Width (without side rails):	21 inch
Table Height (without Matt):	29 - 39 inch
Trendelenburg / Reverse TB	25 degree/25 degree
Back Plate Up/Down	80 degree/ 40 degree
Lateral Tilt Right/Left	20 degree / 20 degree
Backward/Frontward	10 degree / 10 degree



Height Adjustment Up



Height Adjustment Down



Lateral Tilt Left



Lateral Tilt Right



Trendelenburg



Anti-Trendelenburg



Chair Position



Kidney Bridge





**ELECTRICALLY AND MANUALLY OPERATED C - ARM COMPATIBLE OPERATING TABLE  
MEDSONIC - 1000 ADVANCE**

Inbuilt: BATTERY BACKUP ADDITIONAL CONTROL PANEL ZERO POSITION MEMORY FOAM

Inbuilt:



Weight Capacity  
- 300Kg



Sliding Top



Manual Override

Optional



Central Floor  
Locking



Leg Support



Shoulder Support



Anesthetic Screen



Clamps

# MEDSONIC - 1000 ADVANCE

COMPLETE 304G STAINLESS STEEL



## SALIENT FEATURES

- 100% life saving due to low voltage electricity supply
- Offline battery backup up to 3hr.
- 180 kg weight capacity
- Full table function, articulation capability
- Full body imaging without special accessories
- Durable one touch pendant control
- Casters lockable with single action brake
- Fully stainless steel 304 grade accuracy
- Electrical and mechanically operated height, trendelbar / reverse, lateral tilt and sliding top

## TECHNICAL DATA

Head Plate Up/Down:	40degree/30degree
Leg Plate Down:	90 degree
Leg Plate Split:	180 degree
Flex Reflex:	80degree/220degree
Kidney Bridge:	5 degree
Power Input:	220V-50Hz
Table Length:	77 inch
Table Width (without side rails):	21 inch
Table Height (without Matt):	29 - 39 inch
Trendelenburg / Reverse TB	25 degree/25 degree
Back Plate Up/Down	80 degree/ 40 degree
Lateral Tilt Right/Left	20 degree / 20 degree



Trendelenburg



Anti-Trendelenburg



Lateral Tilt Left



Lateral Tilt Right



Height Adjustment Up



Height Adjustment Down



Chair Position



ELECTRICALLY AND MANUALLY  
OPERATED C - ARM COMPATIBLE  
OPERATING TABLE  
**MEDSONIC - 1000**

Inbuilt:  ADDITIONAL CONTROL PANEL  ZERO POSITION



Optional



Low Height



Floor Locking by  
Remote



BATTERY  
BACKUP

ELECTRIC C  
OPERATED TABLE

SS - 500

**MEDSONIC**  
SURGICAL TECHNOLOGIES



Optional:



ZERO POSITION

Inbuilt:



Weight Capacity  
- 160Kg

Inbuilt:  PU FOAM





### SALIENT FEATURES

- Five Section table top allow easy and comfort for positions.
- Radio-translucent top provides easy convenience for x-ray procedures.
- Eccentric pillar to ensure maximum coverage for C-arm machine.
- Interchangeable Head & Leg section.
- Base & column covered with 304 grade stainless still top to ensure high durability & hygiene for the operation room.
- Center Pillar.
- Stainless Fitting – Detachable, head, leg section.
- In built kidney bridge.
- Five Sectional Radio – Translucent Top.
- Cover made of attractive, easy to clean Stainless Steel.
- Sophisticated mechanics provide smooth, step less articulation of the table top for precise patient positioning.
- Pelvic section is optional.
- Stand by Battery back-up with recharging unit is optional.
- Zero position is also optional.

### STANDARD ACCESSORIES

- Five section Mattress: 1 set
- Anesthetist Screen: 1 Nos.
- Padded Shoulder support: 2 Nos.
- Padded Lateral support: 2 Nos.

### TECHNICAL DATA

Head Section:	+40degree-30degree
Leg Section:	0 degree - 90 degree
Leg Plate Split:	180 degree
Floor Locking System:	Locking Foot Brack
Table Length:	1975 mm
Table Width (without side rails):	540 mm
Table Height (without Matt):	710 mm
Trendelenburg / Reverse TB	25 degree/25 degree
Lateral Tilt	+20 inch
Back Section	+70 degree
Maximumm Height without:	960 mm

SEMI ELECTRIC OT TABLE C - ARM  
COMPATIBLE

SS - 501SE

**MEDSONIC**  
SURGICAL TECHNOLOGIES



Inbuilt:



Weight Capacity  
- 160Kg

Inbuilt:  PU FOAM





### SALIENT FEATURES

- Electric up & down by cable remote
- Eccentric pillars
- Stainless fitting
- Detachable, head leg & pelvic section
- In built kidney bridge
- Five Section ratio- Translucent Top,
- Base & cover made of attractive, easy to clean Stainless Steel.
- Sophisticated mechanics provide smooth, step less articulation of the tabletop for precise patient positioning.

### TECHNICAL DATA

Length of table:	1900 mm
Width of tabletop:	520 mm
Minimum height (without Mattress):	Min, 750 mm
Maximum height (without Mattress):	Max, 1000 mm
Trendelenburg:	25°
Reverse Trendelenburg:	25°
Lateral Tilt:	±20°
Back Section:	±70°
Head Section:	±20°
Leg Section:	0°-90°
Floor Locking System:	Manual

HYDRAULIC- ARM COMPATIBLE  
OPERATING TABLE

SS - 501

**MEDSONIC**  
SURGICAL TECHNOLOGIES



Inbuilt:



Weight Capacity  
- 140Kg

Inbuilt:  PU FOAM







### SALIENT FEATURES

- Five Section table top allow easy and comfort for positions.
- Radio-translucent top provides easy convenience for x-ray procedures.
- Eccentric pillar to ensure maximum cover age for C-arm machine.
- Interchangeable Head & Leg section.
- Base & column covered with 304 grade stainless still top to ensure high durability & hygiene for the operation room.
- Durable heavy duty leak proof concealed pump.
- Heavy duty smooth gear mechanism to avail all operating position.
- 2 inch thick water proof mattress.

### STANDARD ACCESSORIES

- Five section Mattress: 1 set
- Anesthetist Screen: 1 Nos.
- Padded Shoulder support: 2 Nos.
- Padded Lateral support: 2 Nos.
- Padded Lithotomic Crutches: 2 Nos.
- Padded Arm Rest: 2 Nos.
- Drive Handle: 1 Nos.

### TECHNICAL DATA

Orthopedic attachment is compatible to all SI-Arm table	
Overall length:	75 cm
Width over side railing:	22 cm
Height:	30" Min, 40" Max
Lift:	10 inches
Trendelenburg & Reverse Trendelenburg:	250
Lateral Tilt:	Both sides 220
Head Section detachable:	900 up
Leg Section:	900 down (manual)
Flex/Reflex:	300/2200



### SALIENT FEATURES

- The Orthopedic Attachment can be used with any operating table.
- In addition, a pelvic support plate is supported on top of the frame and is formed with an asymmetrical construction.
- Stirring Instruments allows flexion/raising of legs & stirring/string ball joints locked from foot end.
- Two traction devices on sliding spot with ball joint allowing flexions & rotations of foot with traction shoe with metallic sole.
- Padded orthopedic knee crutches/ provides support to the legs of the patient.

Orthopedic Attachment is a flexible, easily operable instrument for ORTHOPEDIC SURGERY. The attachment allows the positioning of the extremity as required in regard to the surgery practice and therefore is especially adapted to ensure safe and efficient.





Ortho Attachment allows the table to be used for the lower extremity procedures. Available at competitive price our Ortho Attachment is purely made of stainless steel which resist corrosion.



### SALIENT FEATURES

- The Orthopedic Attachment can be used with any operating table.
- In addition, a pelvic support plate is supported on top of the frame and is formed with an asymmetrical construction.
- Stirring Instruments allows flexion/raising of legs & stirring/string ball joints looked from foot end.
- Two traction devices on sliding spot with ball joint allowing flexions & rotations of foot with traction shoe with metallic sole.
- Padded orthopedic knee crutches/ provides support to the legs of the patient.

## LITHOTOMY STIRRUPS

### SS - 504EX COMPLETE 304G STAINLESS STEEL

- At the same time. The operation risk of medical staff has been reduced. Good application. The patient has also been well protected, reducing the two injury. The pneumatic leg is designed to divide the leg and popliteal pressure. Part of the force and heel part, part of the force and buttocks, soft lining. Quality mat. The design of the wing can provide certain support for the knee to prevent knee valgus. An injury to the medial thigh muscles.

- The pneumatic assist is suitable for department of urology operation, Lithotomy position, obstetrics and Gynecology , endoscopic surgery, direct anorectal surgery and so on.

**MEDSONIC**  
SURGICAL TECHNOLOGIES



This type of leg frame is a new type of leg support device. Its appearance is satisfied. mordan medical requirements for surgical positions have reduced the work intensity of medical staff.





We are ranked as one of the leading manufacturers, suppliers, exporters, traders & distributors of excellent quality neuro surgery Attachments. These neuro surgery Attachments provide neuro Surgeons stable and excellent support as they perform different medical procedures. These neuro Surgery attachments are very durable made from excellent quality stainless steel and other materials . We provide Ophthalmologic procedures using the narrow headrest, neurology procedures in prone position and supine position (Sugita Six Pin fixator and Horse Shoe).

## NEUROATTACHMENTS

### SS - 503



Mayfield Attachment

Sugita Six Pin fixator

#### MAIN DATA:

1. moving distance between front and back:350mm
2. moving distance between left and right:400mm
3. moving distance between top and bottom:350mm
4. the swing angle:  $\geq 75^\circ$
5. distance adjustment range of install center:190-590mm

#### Product Description Structure & Performance:

1. One complete Set of instrument is composed of the base, skull fixaturerackandU-Shaped head bracket. They can be assembled at will according to operation needs.
2. Instrument adopts crank-link structure, and locking adopts lever handle fasten, which are safe and reliable.
3. One complete Set of instrument with reasonable design, compact overall structure, small cubage, which increased the scope of operation activities and reduced the doctor's physical.
4. Easy to install and adjust, which reduces the time of preoperative preparation



**MAYFIELD ATTACHMENT:**  
Stable, High Precision 3 point fixation of the head during surgery.  
Suitable for Children and Adults.  
Made up of SS 304 G.



**HORSE SHOE ATTACHMENT:**

1. Made up of SS 304 G.
2. Horse shoe shaped section for positioning of head and desired level during surgery.
3. Stable and Comfortable.

GENERAL SURGERY OT TABLE  
HYDRAULIC

SS - 502

**MEDSONIC**  
SURGICAL TECHNOLOGIES



Inbuilt:



Weight Capacity  
- 140Kg

Inbuilt:  PU FOAM





### SALIENT FEATURES

- Center Pillar.
- Stainless Fitting.
- Made of 304 grade stainless steel.
- Detachable head & legs & section.
- In build kidney bridge.
- Radio translucent top provides easy convenience for x-ray procedures.

### STANDARD ACCESSORIES

- Five section Mattress: 1 set
- Anesthetist Screen: 1 Nos
- Padded Shoulder support: 2 Nos
- Padded Lateral support: 2 Nos
- Padded Lithotomic Crutches: 2 Nos
- Padded Arm Rest: 2 Nos
- Drive Handle: 1 Nos.

### TECHNICAL DATA

Head Plate Up/Down:	35degree/30degree
Leg Plate Down:	85 degree
Leg Plate Split:	180 degree
Flex Reflex:	80degree/220degree
Kidney Bridge:	4 degree
Minimum Height:	30 inch
Maximum Height:	40 inch
Table Length:	77 inch
Table Width (without side rails):	21 inch
Table Height (without Matt):	710-960
Trendelenburg / Reverse TB:	40 degree/40 degree
Back Plate Up/Down:	70 degree/40 degree
Lateral Tilt Right/Left:	20 degree / 20 degree

GYNAE ELECTRIC COUCH

SS - 506

**MEDSONIC**  
SURGICAL TECHNOLOGIES



Inbuilt:



Weight Capacity  
- 140Kg







### SALIENT FEATURES

- Functional and versatile.
- Flexibility and precision
- Hygienic design
- Easy cleaning
- User - friendly

### TECHNICAL DATA

Head Plate Up/Down:	35degree/30degree
Leg Plate Down:	85 degree
Leg Plate Split:	180 degree
Flex Reflex:	80degree/220degree
Kidney Bridge:	4 degree
Power Input:	220V-50Hz
Table Length:	1975 mm
Table Width (without side rails):	540 mm
Table Height (without Matt):	710-960
Trendelenburg / Reverse TB:	40 degree/40 degree
Back Plate Up/Down:	75 degree/40 degree
Lateral Tilt Right/Left:	20 degree / 20 degree

OPHTHALMIC MANUAL OT TABLE

SS - 505H

**MEDSONIC**  
SURGICAL TECHNOLOGIES

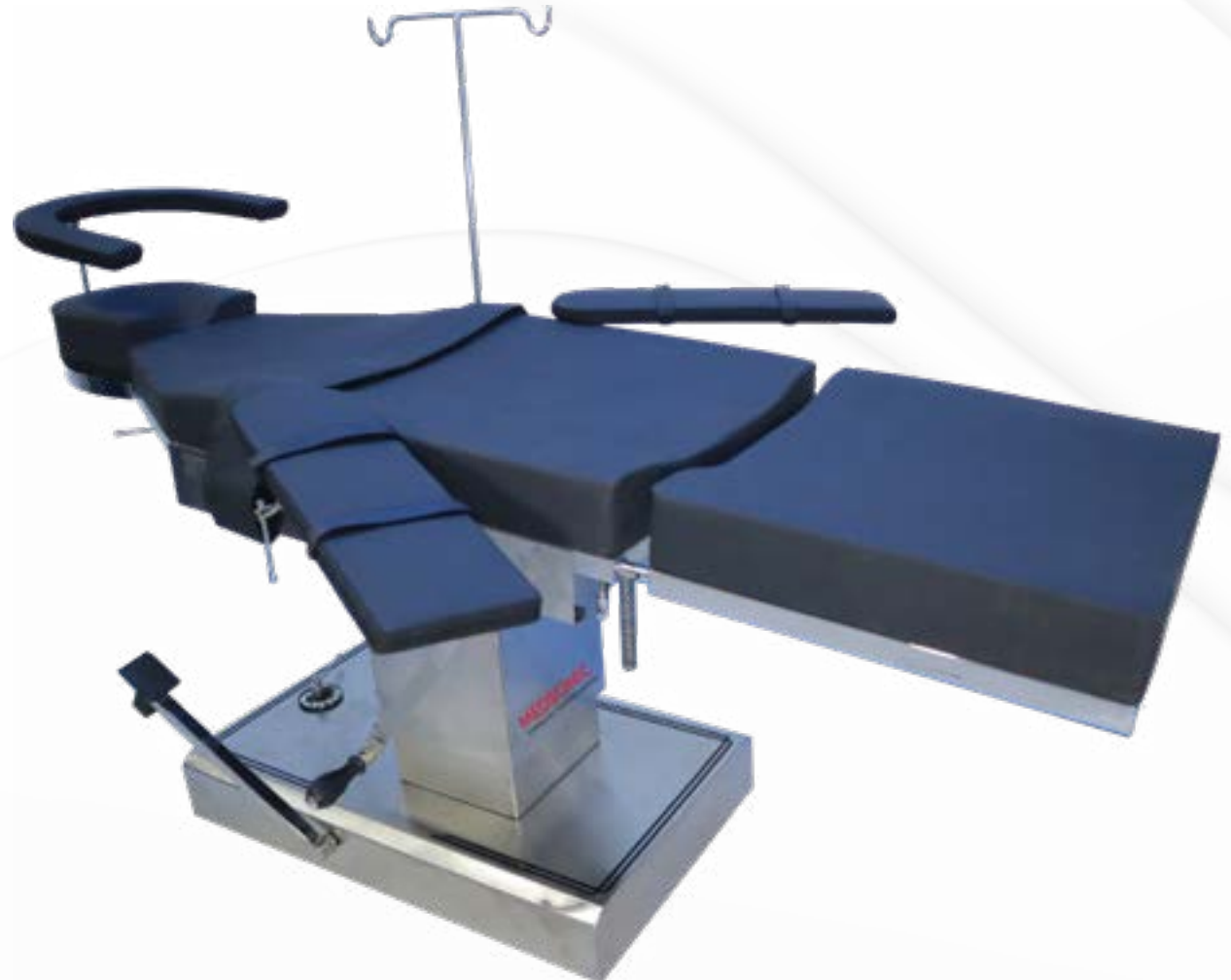


Inbuilt:



Weight Capacity -  
140-150Kg

Inbuilt:  PU FOAM





### SALIENT FEATURES

- Eccentric Pillars.
- Stainless Fitting.
- Detachable, head & leg section.
- Three Sectional Radio-Translucent top.
- Base & Cover made of attractive, easy to clean Stainless Steel.
- Sophisticated mechanics provide smooth, step less articulation of the table top for precise patient positioning.
- Durable heavy duty leak proof cancelled pump.

### STANDARD ACCESSORIES

- Hand Rest
- IV stand

### TECHNICAL DATA

Table Length:	74 inch
Width of Table Top:	20 inch
Minimum Height (without Matt):	29 inch
Maximum Height (without Matt):	39 inch
Trandelenburg:	25 degree
Reverse Trandelenburg:	25 degree

OPHTHALMIC ELECTRIC OT TABLE

SS - 505E

**MEDSONIC**  
SURGICAL TECHNOLOGIES



Inbuilt:



Weight Capacity -  
160 Kg

Inbuilt:  PU FOAM





**SS - 505E**  
**COMPLETE 304G STAINLESS STEEL**

### **SALIENT FEATURES**

- Eccentric Pillars.
- Stainless Fitting.
- Detachable, head & leg section.
- Three Sectional Radio-Translucent top.
- Base & Cover made of attractive, easy to clean Stainless Steel.
- Sophisticated mechanics provide smooth, step less articulation of the table top for precise patient positioning.

### **STANDARD ACCESSORIES**

- Hand Rest
- IV stand
- Foot pedal

### **TECHNICAL DATA**

Table Length:	74 inch
Width of Table Top:	20 inch
Minimum Height (without Matt):	29 inch
Maximum Height (without Matt):	39 inch
Trandelenburg:	25 degree
Reverse Trandelenburg:	25 degree

OBS GYNAE COUCH ELECTRIC

SS510

**MEDSONIC**  
SURGICAL TECHNOLOGIES





**SS510**  
**COMPLETE 304G STAINLESS STEEL**

**SALIENT FEATURES**

- Functional and versatile
- Flexibility and precision
- Hygienic design
- Easy cleaning
- User – friendly

**MAIN FUNCTIONS**

Back Section: 60\*80cm  
 Seat Section: 60\*40cm  
 Hi-Low: 55-90cm  
 Packing Size: 155\*65\*70  
 N/W: 70KGS G.W: 80KGS

**STANDARD CONFIGURATION**

- 1Pcs bed body, 1set mattress
- 1pcs manual controller
- 1set leg bracket 2 pcs locker
- 1set pull handle, 1 pcs waste basin
- 1 pcs product qualification certificate

**TECHNICAL DATA**

Table Length:	62 inch
Width of Table Top:	21 inch
Minimum Height (without Matt):	29 inch
Maximum Height (without Matt):	39 inch
Lateral Filt:	±20 degree
Back Section:	±80 degree
Leg Section:	0 degree - 90 degree
Floor Locking System:	Manual



SMALL ANIMAL OT TABLE  
HYDRAULIC

SS A511

**MEDSONIC**  
SURGICAL TECHNOLOGIES



Foot Switch (Optional)

Also available electrically up down





**SALIENT FEATURES**

- Stainless Fitting
- Made of 304 (202) grade
- Up Down 8 side till, stainless steel

**TECHNICAL SPECIFICATION**

- Height Max – 39 inch (990mm)
- Down – 30.5 inch (775mm)

**STANDARD ACCESSORIES**



Leg Support



Shoulder Support



5 Section Mattress



Anesthetic Screen



Shoulder Support



Clamps

OPTIONAL ACCESSORIES



Pelvic Attachments



Table Length Extension



Table Length Extension



Chair Position



Hand Operation Attachement



Orthopedic Attachment Stand



Split Leg Section



Accessories Stand



Knee Support



Horse Shoe



X-Ray Top



Urology or Gynae Tray



Cervical in Supine Laminectomy Frame



Foot Support



Instrument Trolley



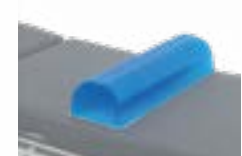
Head Rest, Gel, Adult



Horseshoe Head Rest, Gel, Adult



Arm Rest, Gel



Chest Roll, Gel, Adult

# MEDSONIC

SURGICAL TECHNOLOGIES

HEAD QUARTERS

LONDON, ENGLAND  
THESSALONIKI, GREECE



17+

YEARS OF EXCELLENCE



1000+

PRODUCTS



5500+

SATISFIED CUSTOMERS



1200+

SUCCESSFUL PROJECTS

# MEDSONIC

SURGICAL TECHNOLOGIES

**Head Office:**

71-75 Shelton Street, Covent Garden,  
London, England, United Kingdom

E-mail: [edd@medsonic.uk](mailto:edd@medsonic.uk)

[www.medsonic.uk](http://www.medsonic.uk)

**Europe Head Office:**

66 Nikolaou Plastira, Liti,  
Thessaloniki, Greece

E-mail: [info@medsoniceurop.com](mailto:info@medsoniceurop.com)

[www.medsoniceurope.com](http://www.medsoniceurope.com)